



Demographic and Income Profile

Ramsey, Anoka County, Minnesota, United States
 Ring: 5 mile radius

Prepared by Esri
 Latitude: 45.26110
 Longitude: -93.45000

Summary	Census 2010	2016	2021
Population	47,534	49,966	52,349
Households	16,733	17,729	18,649
Families	13,032	13,721	14,382
Average Household Size	2.83	2.80	2.79
Owner Occupied Housing Units	14,323	15,045	15,831
Renter Occupied Housing Units	2,410	2,684	2,818
Median Age	36.1	37.3	38.3
Trends: 2016 - 2021 Annual Rate	Area	State	National
Population	0.94%	0.74%	0.84%
Households	1.02%	0.74%	0.79%
Families	0.95%	0.68%	0.72%
Owner HHs	1.02%	0.73%	0.73%
Median Household Income	2.70%	2.56%	1.89%

Households by Income	2016		2021	
	Number	Percent	Number	Percent
<\$15,000	676	3.8%	725	3.9%
\$15,000 - \$24,999	829	4.7%	806	4.3%
\$25,000 - \$34,999	883	5.0%	771	4.1%
\$35,000 - \$49,999	1,958	11.0%	2,007	10.8%
\$50,000 - \$74,999	3,764	21.2%	2,531	13.6%
\$75,000 - \$99,999	2,986	16.8%	3,452	18.5%
\$100,000 - \$149,999	4,037	22.8%	4,978	26.7%
\$150,000 - \$199,999	1,639	9.2%	2,227	11.9%
\$200,000+	956	5.4%	1,150	6.2%
Median Household Income	\$79,891		\$91,280	
Average Household Income	\$96,316		\$106,965	
Per Capita Income	\$33,962		\$37,842	

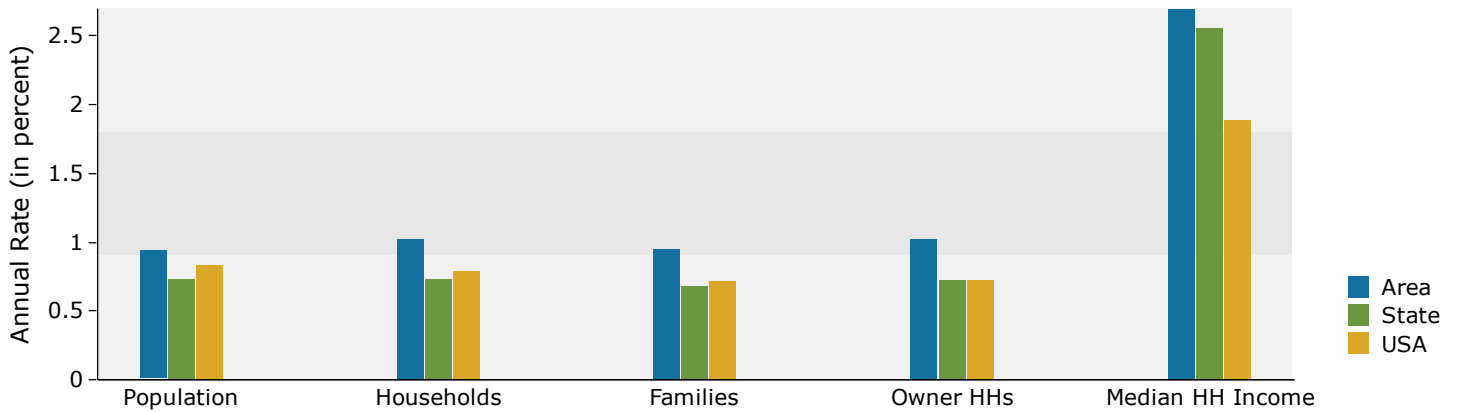
Population by Age	Census 2010		2016		2021	
	Number	Percent	Number	Percent	Number	Percent
0 - 4	3,253	6.8%	3,215	6.4%	3,294	6.3%
5 - 9	3,551	7.5%	3,559	7.1%	3,497	6.7%
10 - 14	3,776	7.9%	3,768	7.5%	3,845	7.3%
15 - 19	3,679	7.7%	3,454	6.9%	3,472	6.6%
20 - 24	2,665	5.6%	2,996	6.0%	2,641	5.0%
25 - 34	6,110	12.9%	6,435	12.9%	6,860	13.1%
35 - 44	7,224	15.2%	7,056	14.1%	7,644	14.6%
45 - 54	8,023	16.9%	7,930	15.9%	7,300	13.9%
55 - 64	5,495	11.6%	6,339	12.7%	7,003	13.4%
65 - 74	2,658	5.6%	3,772	7.5%	4,665	8.9%
75 - 84	843	1.8%	1,144	2.3%	1,754	3.4%
85+	258	0.5%	299	0.6%	374	0.7%

Race and Ethnicity	Census 2010		2016		2021	
	Number	Percent	Number	Percent	Number	Percent
White Alone	43,541	91.6%	44,800	89.7%	45,832	87.5%
Black Alone	1,322	2.8%	1,905	3.8%	2,530	4.8%
American Indian Alone	223	0.5%	256	0.5%	291	0.6%
Asian Alone	1,081	2.3%	1,284	2.6%	1,568	3.0%
Pacific Islander Alone	13	0.0%	18	0.0%	24	0.0%
Some Other Race Alone	412	0.9%	520	1.0%	666	1.3%
Two or More Races	943	2.0%	1,183	2.4%	1,440	2.8%
Hispanic Origin (Any Race)	1,283	2.7%	1,599	3.2%	2,007	3.8%

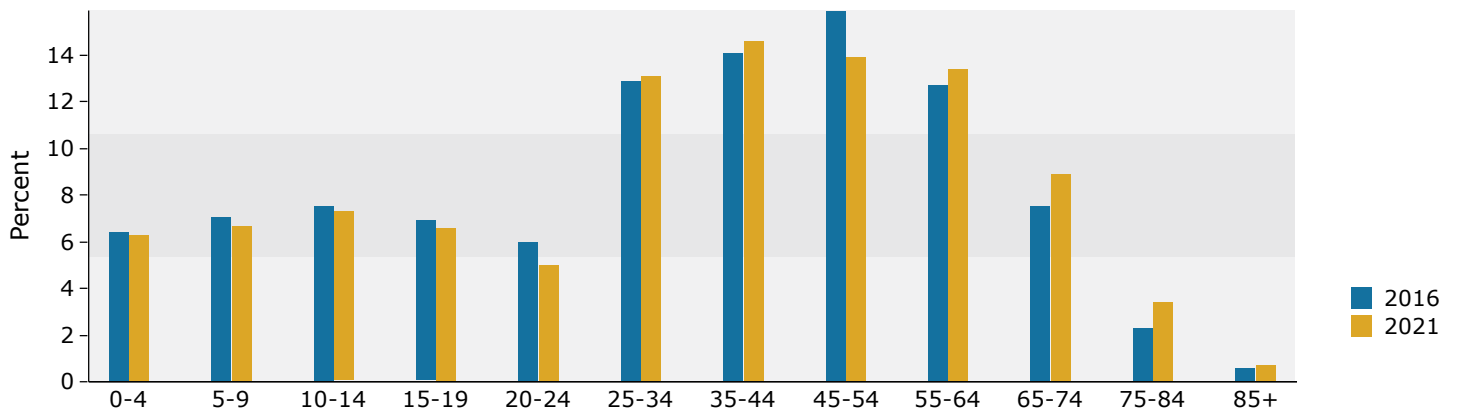
Data Note: Income is expressed in current dollars.

Source: U.S. Census Bureau, Census 2010 Summary File 1. Esri forecasts for 2016 and 2021.

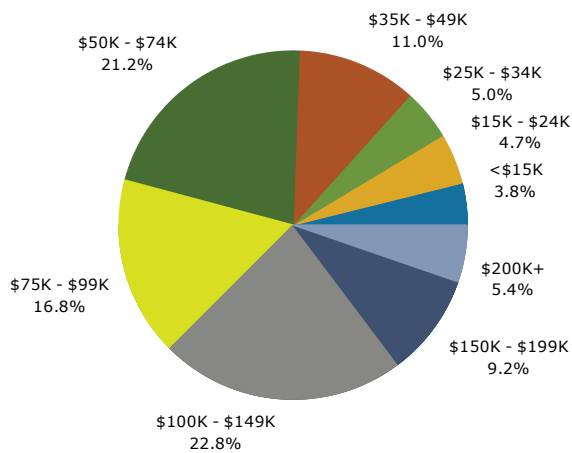
Trends 2016-2021



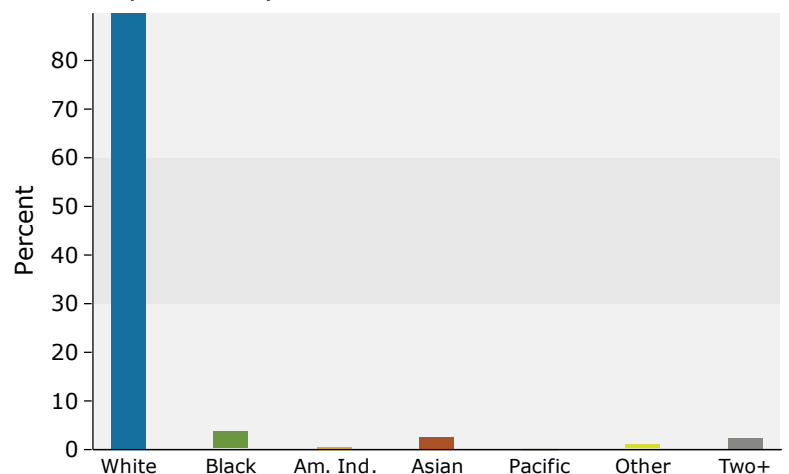
Population by Age



2016 Household Income



2016 Population by Race



2016 Percent Hispanic Origin: 3.2%

Source: U.S. Census Bureau, Census 2010 Summary File 1. Esri forecasts for 2016 and 2021.



Demographic and Income Profile

Ramsey, Anoka County, Minnesota, United States
 Ring: 10 mile radius

Prepared by Esri
 Latitude: 45.26110
 Longitude: -93.45000

Summary	Census 2010	2016	2021
Population	235,445	248,396	260,574
Households	84,193	89,046	93,512
Families	63,253	66,551	69,701
Average Household Size	2.78	2.77	2.77
Owner Occupied Housing Units	70,577	73,908	77,683
Renter Occupied Housing Units	13,616	15,138	15,829
Median Age	36.4	37.3	38.1
Trends: 2016 - 2021 Annual Rate	Area	State	National
Population	0.96%	0.74%	0.84%
Households	0.98%	0.74%	0.79%
Families	0.93%	0.68%	0.72%
Owner HHs	1.00%	0.73%	0.73%
Median Household Income	2.35%	2.56%	1.89%

Households by Income	2016		2021	
	Number	Percent	Number	Percent
<\$15,000	3,931	4.4%	4,229	4.5%
\$15,000 - \$24,999	4,312	4.8%	4,192	4.5%
\$25,000 - \$34,999	5,259	5.9%	4,717	5.0%
\$35,000 - \$49,999	9,635	10.8%	10,138	10.8%
\$50,000 - \$74,999	17,435	19.6%	12,083	12.9%
\$75,000 - \$99,999	15,007	16.9%	16,937	18.1%
\$100,000 - \$149,999	20,167	22.6%	24,534	26.2%
\$150,000 - \$199,999	7,876	8.8%	10,252	11.0%
\$200,000+	5,423	6.1%	6,428	6.9%
Median Household Income	\$80,118		\$89,996	
Average Household Income	\$97,087		\$106,771	
Per Capita Income	\$34,957		\$38,472	

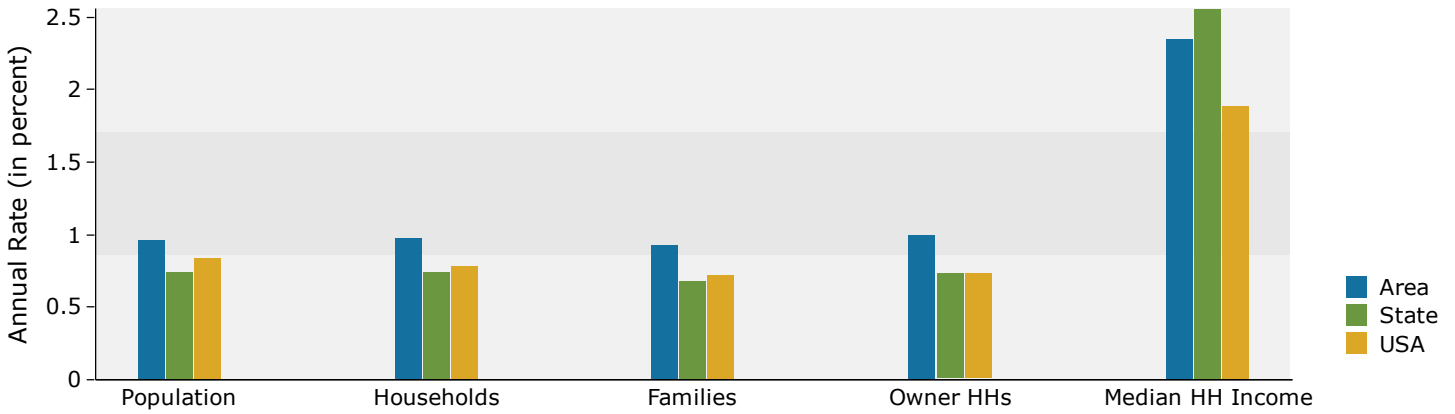
Population by Age	Census 2010		2016		2021	
	Number	Percent	Number	Percent	Number	Percent
0 - 4	16,384	7.0%	16,110	6.5%	16,532	6.3%
5 - 9	17,782	7.6%	17,395	7.0%	17,176	6.6%
10 - 14	18,578	7.9%	18,565	7.5%	18,702	7.2%
15 - 19	17,540	7.4%	16,847	6.8%	17,226	6.6%
20 - 24	12,676	5.4%	14,720	5.9%	13,097	5.0%
25 - 34	30,209	12.8%	32,733	13.2%	35,636	13.7%
35 - 44	35,729	15.2%	34,191	13.8%	37,063	14.2%
45 - 54	40,171	17.1%	38,702	15.6%	35,131	13.5%
55 - 64	25,906	11.0%	31,992	12.9%	35,285	13.5%
65 - 74	12,466	5.3%	17,670	7.1%	22,487	8.6%
75 - 84	5,749	2.4%	6,878	2.8%	9,261	3.6%
85+	2,259	1.0%	2,591	1.0%	2,978	1.1%

Race and Ethnicity	Census 2010		2016		2021	
	Number	Percent	Number	Percent	Number	Percent
White Alone	212,570	90.3%	219,322	88.3%	224,589	86.2%
Black Alone	7,807	3.3%	10,497	4.2%	13,369	5.1%
American Indian Alone	1,129	0.5%	1,273	0.5%	1,414	0.5%
Asian Alone	6,766	2.9%	8,422	3.4%	10,340	4.0%
Pacific Islander Alone	70	0.0%	100	0.0%	125	0.0%
Some Other Race Alone	1,944	0.8%	2,426	1.0%	3,062	1.2%
Two or More Races	5,158	2.2%	6,356	2.6%	7,676	2.9%
Hispanic Origin (Any Race)	6,263	2.7%	7,754	3.1%	9,618	3.7%

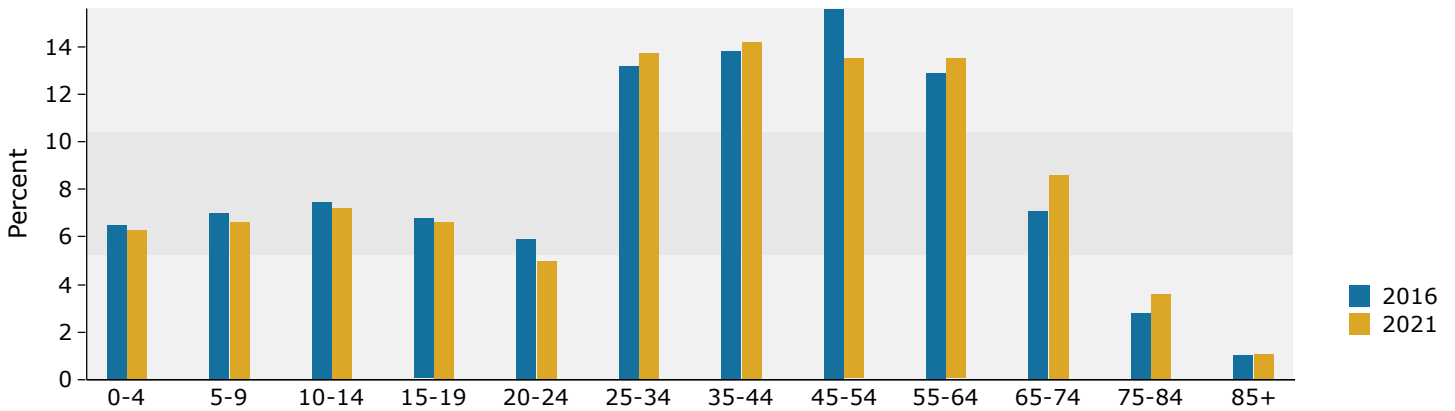
Data Note: Income is expressed in current dollars.

Source: U.S. Census Bureau, Census 2010 Summary File 1. Esri forecasts for 2016 and 2021.

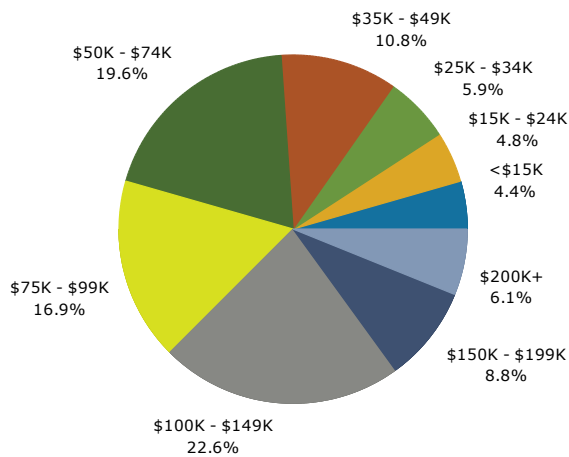
Trends 2016-2021



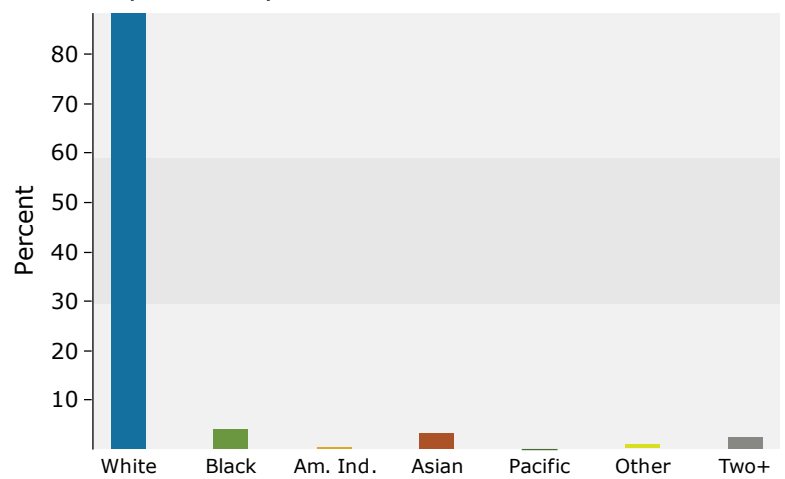
Population by Age



2016 Household Income



2016 Population by Race



2016 Percent Hispanic Origin: 3.1%