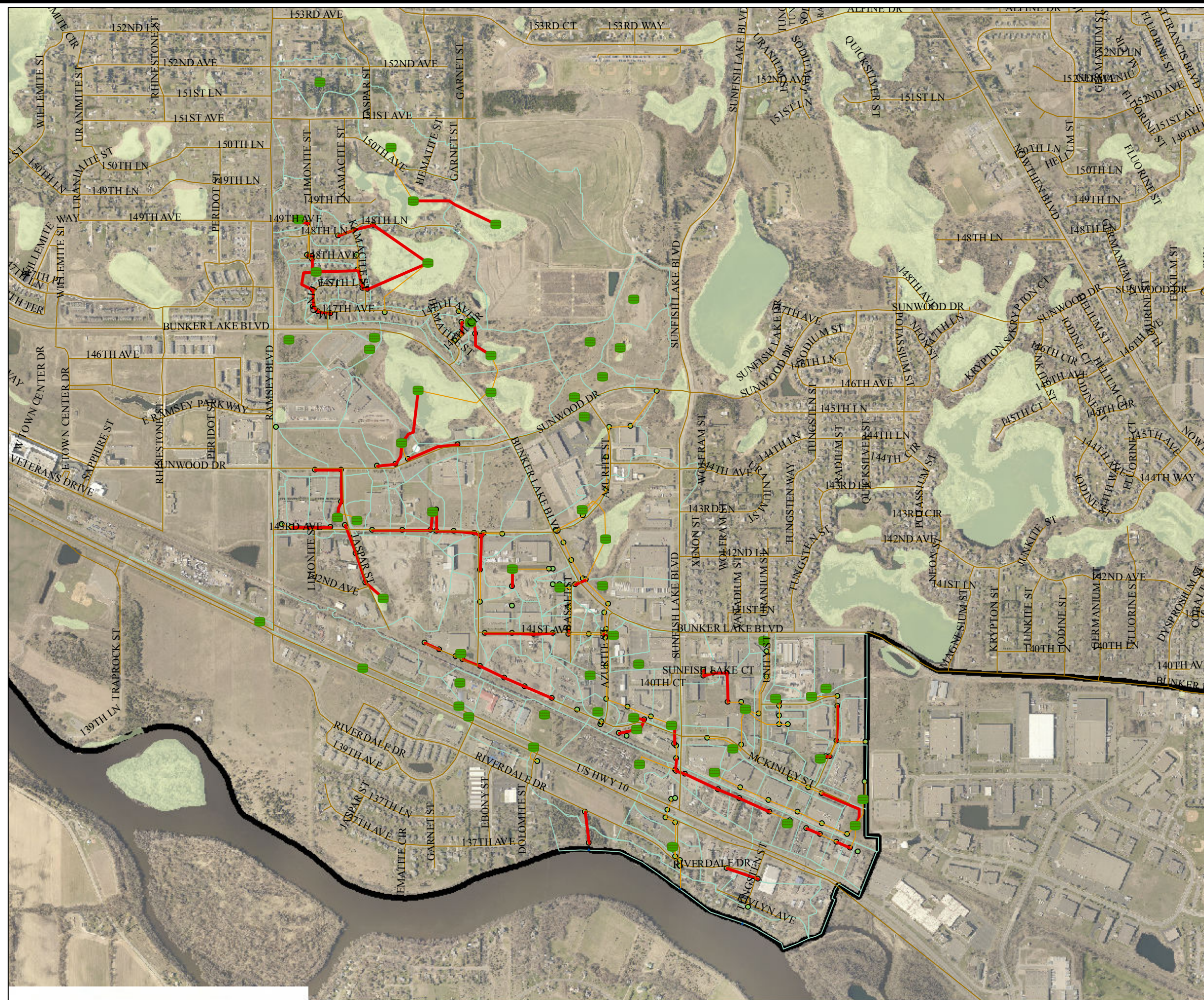












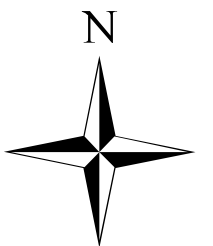
EMISS PIPE SUMMARY 10 YEAR PIPE CAPACITY

FIGURE NO. 15
OCTOBER, 2015



Legend

-  Pond
- PIPE_FULL**
-  Pipe
-  Pipe Flowing Full
-  Junc
-  Outfall
-  Subbasin
-  NWI
-  City Limits



0 500 1,000 2,000 Feet